



# February

## Timber-Cat, where is he now?

Listen my friends and you will hear of the midnight ride of Paul Revere...not so fast. That's not where it's at. The honor goes to a black and white cat.

If you have been near the confluence of wings J, K and M over the past year, you have observed our feline friend. Mary Beth along with many others, kept him supplied with food, water and shelter. He became quite spoiled and loved.

For various reasons, it was determined that this location was not ideal. Especially given the advent of winter. Thus, the search for a more suitable environment began. I reached out to a friend, Julie Cassel, who lives on the farm where I spent the first 24 years of my life.

Timber-Cat's new home is the building that was constructed as a farrowing house with a door just wide enough for a cat. He has a vast supply of food, water and straw for warmth. He has found friendship in a mother cat and her two kittens. The property is located just east of North Manchester near the Servia International Airport. If you wish to visit, please contact me at 260-466-3779.

-Leland Beery



## Ole Farmer's Club

The Timbercrest Ole Farmer's Club will meet on **Monday, February 2 and Monday, February 16 at 9:00 a.m. in The Nook.**

## Timbercrest Bi-Annual Quilt Show



Timbercrest is home to so many talented quilters and we'd like to take this opportunity to share their work with you. The Timbercrest Bi-Annual Quilt Show will take place **February 2<sup>nd</sup> through February 20<sup>th</sup> in the Assembly Room.**

During this time, quilters and collectors will have several pieces on display for viewing. The Neighborhood Market will have some small quilts available for purchase.

There are set hours that the Assembly Room will be accessible for viewing the quilts. This allows us to keep the quilts secure.

## Manchester University Alumni Showcase Series 2026

Manchester University's final Alumni Showcase of 2026 will be held **Tuesday, February 3 at 7:00 p.m. in the Chapel.** This session will feature Manchester University students, staff and faculty telling about their Jan-Term trip to Nepal.

## Choir Practice

The Timbercrest Choir rehearsals resume on **Monday, February 2 at 10:00 a.m. in the Assembly Room.** Rehearsals take place Every Monday leading up-to the Spring performance on Friday, May 15<sup>th</sup>. If you are out and about on Monday mornings, pop a squat outside the Assembly Room and listen for a spell. You'll be glad you did!

### **Timbercrest Book Club:**

The Timbercrest Book Club is moving their meeting to the first Monday of each month! That means they will meet on **Monday, February 2 at 2:00 p.m. in the Conference Room.**

If you are interested in joining, books can be picked up from Jennifer Gearhart's office in the Hub. We love new members!

### **Breakfast Out The Crystal**

Join Carol for breakfast out on **Tuesday, February 3 leaving the Hub at 8:30 a.m.** Sticking close to home, we'll make the short drive downtown to The Crystal Main Street Grill. There aren't many places left in town to get breakfast and The Crystal just celebrated 21 years in business!

You are responsible for the cost of your meal & gratuity. **The bus will leave from the Hub at 8:30 a.m. Sign up in the notebook outside the Courtyard Dining Room.**

### **Reclaim the Rhythm**

*Reclaim the Rhythm* exercise classes are working hard to target the effects of Parkinson's Disease on our strength and balance. These sessions are open for anyone to join us. You do not need a Parkinson's diagnosis.

*Reclaim the Rhythm* takes place every **Tuesday and Thursday at 11:15 a.m. in the Assembly Room.** Classes last approximately 45 – 50 minutes.

### **Super Bowl Watch Party**

Watch the Seattle Seahawks and the New England Patriots battle it out on the big screen in the **Assembly Room on Sunday, February 8. Kick-off is at 6:30 p.m.** The popcorn will be popping!

### **Pre-School Visitors**

Barring any additional illness, our Pre-School friends return will on **Monday, February 9 at 1:00 p.m. in the Crestwood Dining Room.**

### **Art Factory**

Jena Oke will lead the Art Factory on **Monday, February 9 at 2:00 p.m. in the Assembly Room.** Jena will do a quilt-related art project to coordinate with our Quilt Show. **Sign up in the notebooks at Rose Garden and Courtyard** to ensure we have enough supplies.

### **Memoir Writing Group**

The memoir group extends an invitation to all Timbercrest people to join us on the **2<sup>nd</sup> Tuesday of the month at 2:00 p.m. in the Guest Dining Room located in the West Basement.** This is our topic to write about and then read aloud for upcoming meeting:

**Feb 10:** A funny thing that happened at your job or other work

**Feb 24:** If you could keep only three objects, what would they be?

Questions? Contact Eileen Flory, 982-0088, [eflory@peak.org](mailto:eflory@peak.org).

### **Friends of Manchester University Dr. Pamela Haynes**




The Friends of Manchester program on **Tuesday, February 10 at 6:30 p.m. in the Chapel** will be presented by Dr. Pamela Haynes, Director of the Honors Program.

Manchester has a smaller enrollment, more first-generation students, more of a slant toward pre-med courses, and a lively Honors Program. Doesn't that mean extra work? What does the program involve that is so appealing to students? Who signs up for extra and extra-challenging work? Dr. Haynes will tell us about Manchester's Honors Program and answer all the questions!

Come to the Chapel to learn about this special program for high school students and other information about the Admissions Office. Everyone is welcome!

### **Valentine's Day Party**

Roses are red, violets are fine, grab your friends – it's Valentine's time! Celebrate with us on **Wednesday, February 11 at 2:00 p.m. in the Assembly Room.** Music, games, snacks, and good vibes guaranteed. Cupid approved. 

### **Grand Spartan Schedule**

**Due Feb 14:** A Valentine/note/card for your Spartan. A donation of candy or snacks for care packages may be given to Carol. Care packages will be delivered at the game 2/14.  
**Saturday, Feb. 14:** v Earlham Coll. bus @ 12:30p  
**Wednesday, Feb. 18:** v Franklin Coll. bus @ 6:30p

## All-Resident Meeting

Gather with us in the **Assembly Room on Thursday, February 12 at 9:30 a.m.** for the quarterly All-Resident Meeting. We'll hear updates from Dean Beery, Resident Council President, and Christy Huiras, Executive Director. Members of other departments will be available to answer questions as well.

## Lunch Out

Venture out for lunch with Melissa Shorter on **Monday, February 16**. Melissa has not yet tried **Koi Japan** in downtown North Manchester and would love to share the experience with you! If you would like to see a menu before you go, stop by Adrienne's office in the Hub.

You are responsible for the cost of your meal & gratuity. **The bus will leave from the Hub at 11:30 a.m. Sign up in the notebook outside the Courtyard Dining Room.**

## Fat Tuesday!



Celebrate Fat Tuesday New Orleans style with fresh hot Beignets **Tuesday, February 17 from 9:30 a.m. until 10:30 a.m. in the Nook.** We won't encourage you to dress for Carnival but you are welcome to wear your brightest purple, green and gold! Stay hydrated throughout the day with a refreshing Hurricane Punch stationed outside Adrienne's office in the Hub.

## Tuesday Matinee A Carpenter's Prayer

This month's Tuesday Matinee features the true story of a pastor and his family building a new church and a troubled carpenter who becomes their unlikely source of hope, proving that faith in God is the true path to redemption, even in the most tragic circumstances. They needed a church. He needed a second chance. Don't miss "*A Carpenter's Prayer*" on **Tuesday, February 17 at 2:00 p.m. in the Chapel.**



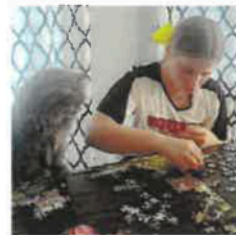
## Random Acts of Kindness

**Tuesday, February 17 is Random Acts of Kindness Day;** a day to celebrate and encourage kindness and the pay it forward mentality. To help facilitate this, a *kindness station* will be set up in the Hub with stationary and supplies needed for you to write a little note of encouragement for a neighbor. Handouts with suggestions on ways that you can spread kindness will also be available.

## Timbercrest Technology Users Group (TUG)

The Timbercrest Technology Users' group will meet in the **Conference Room** in the west basement on **Friday, February 20, 10:00 a.m.** All residents who have a computer, printer, tablet, or smart phone are invited to attend. The TUG topic will be how to use Windows File Manager to work with files. This includes file attachments (documents, photos, etc.) that are created and/or received/sent through e-mail. As always, the start of the meeting will be open discussion about items of interest or problems/questions about your personal technology devices. Come listen in even if you don't have any issues yourself since education is one of the goals of TUG meetings.

## Photo Op!



**Friday, February 20** is *National Love Your Pets Day*. Timbercrest residents and staff are invited to celebrate by sharing photos of yourself, past and present, with your lovable fur-friends. Photos can be hand

delivered, emailed or texted to Adrienne @ [akamphues@timbercrest.org](mailto:akamphues@timbercrest.org) and they will then be displayed along A-Street for the weekend. Please have photos to Adrienne by Thursday, February 19<sup>th</sup>.

## Game Night with Mike and Lucy

Join Mike and Lucy McKinley for an evening of cards, Rummikub, dominoes, board games and refreshments **Wednesday, February 25 at 6:00 p.m. in the West Side of the Rose Garden.**



### Oasis

Come for inspiration and reflection every **Wednesday at 4:00 p.m.** in-person in the Chapel.

- February 4 Stories behind Hymns - Marilyn Kieffaber
- February 11 Vocal Ensembles – Manchester High School
- February 18 Ash Wednesday Service – Laura Stone
- February 25 Labyrinth Walk – David Doudt & Kim Ebersole

Come to Oasis in person. It is also broadcast live on the Timbercrest Senior Living YouTube Channel and can also be viewed at a later time on the YouTube channel.

### Midweek Breaks

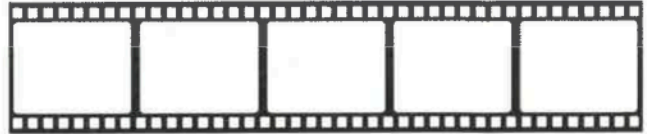
A tasty treat is served each **Wednesday from 2:30-3:30 p.m.** in The Nook. This month features:

- February 4 Treats from *Beth Sollenberger*
- February 11 Valentine’s Day Treats
- February 18 Soft Serve Sweetheart Sundaes
- February 25 Popcorn Parlor

### Manchester University VIA Events

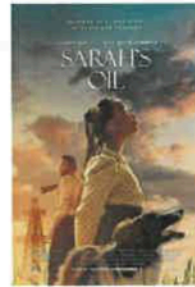
The Spring semester brings the return of the Monday morning Values, Ideas and The Arts lectures at Manchester University. VIA features speakers, musicians and dramatic performers from the University community, across the country and around the globe.

Lectures are held every Monday morning beginning February 2<sup>nd</sup>. Information and sign-up sheets are available in the notebooks at the Rose Garden and the Courtyard.



### Friday Night at the Movies Presented by Timbercrest Movie Committee *Come to the Chapel for our films*

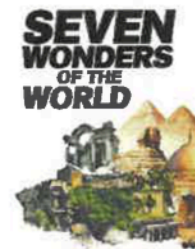
#### Friday, February 6: Sarah’s Oil



**7:00 p.m.** – Chapel  
**Run Time: 1hr 44mins**  
w/subtitles

In the early 1900’s, young Sarah Rector believes there’s oil beneath the barren land she’s allotted in Indian Territory. As greedy sharks close in, Sarah turns to family, friends and some Texans wildcatters to maintain control of her oil-rich land, eventually becoming one of the first female African American millionaires.

#### Friday, February 20: Seven Wonders of the World



**7:00 p.m.** – Chapel  
**Run Time: 1hr 31mins**  
w/subtitles

The Great Pyramid of Giza, Mausoleum of Halicarnassus, Statue of Zeus at Olympia, Colossus of Rhodes, Temple of Artemis, Hanging Gardens of Babylon, and the Pharos of Alexandria. Of the Seven Wonders, only the Great Pyramid remains.

### Seniors for Peace

The Seniors for Peace Program on **Thursday, February 26 at 10:00 a.m. in the Chapel** will discuss the disturbing things currently happening in our world. We have asked Bob Gross to give some guidance for the gathering and discussion as we share about the heaviness of these times. Come with your concerns, questions and thoughts.

## A Lenten Labyrinth Walk

During the preparatory season of Lent, walking a labyrinth can help you slow down, quiet your mind, and open yourself to God's presence. Prayer is turned onto a moving meditation as you silently wind through the path on your personal Lenten journey, looking inward to release life's burdens and receive God's love and guidance.

Join David Doudt and Kim Ebersole during Oasis on **Wednesday, February 25 at 4:00 p.m.** as they lead this meditative experience. You are welcome to come and walk the labyrinth or sit and contemplate the journey in your heart and mind if walking is difficult for you.



## Game Day

Join us for an afternoon of Bunko and other games on **Friday, February 27 beginning at 2:00 p.m. in the Resident Activity Room!**

## Exercise Opportunities

Timbercrest holds group exercise classes Monday through Friday. Open and adaptable to all fitness levels!

- Chair Aerobics – **Monday through Friday at 9:30 a.m. in the Recreation Room**
- Chair Yoga – **Monday at 10:00 a.m.**
- Strength Training – **Tuesdays and Thursdays at 10:00 a.m. in the Recreation Room**
- Walk & Roll – **Wednesday at 10:00 a.m. Rose Garden Lounge**
- Chair Tai Chi – **Friday at 10:00 a.m. in the Recreation Room**
- Chair Aerobics – **Monday & Friday at 1:30 p.m. in the Health Care Family Room**
- Strength Training – **Wednesday at 1:30 p.m. in the Health Care Family Room**
- Reclaim the Rhythm; Parkinson's Exercise – **Tuesday & Thursday at 11:15 a.m. in the Assembly Room**

## February Chapel Schedule

Come to Chapel to hear thoughts from scripture, prayer and other inspiration. Devotions are **Tuesday, Thursday and Friday at 9:00 a.m. Worship Service at Manchester Church of the Brethren is live streamed in the Chapel at 9:30 a.m. every Sunday morning.**

### February Speakers:

- Feb 3 – Ray Hedstrom - UMC
- Feb 5 – Susanna Hicks – First Brethren Church
- Feb 6 – Tim Ritchey Martin - CoB
- Feb 10– David Lawrenz – Zion Lutheran Church
- Feb 12 – Father Daniel Koehl – St Roberts Catholic
- Feb 13 – Diane Quance – Claypool UMC
- Feb 17 – Gary Heisler – Manchester CoB
- Feb 19 – Andrea Lantz – Manchester UMC
- Feb 20 – Chris Ponchot – Roann Christian Church
- Feb 24 – Chris Brock – Urbana Yoke Parish
- Feb 26 – Seth Hendricks – Manchester CoB
- Feb 27 – David Hendricks – South Bend CoB

*Thank you to the Chapel Planning Committee for scheduling these dedicated speakers!*

## Contemporary Book Club

The contemporary book club meets each **Friday at 3:00 p.m. in the Conference Room** on the lower level. They are currently discussing "Burned by Billionaires" written by Chuck Collins. The synopsis provided by Amazon reads "This is a scathing expose' of the hidden impact of America's ultra-wealthy on our social, economic, political. And ecological landscape – as well as a path towards a more equitable future. If you have questions, contact David Doudt at 260-578-4748.

## Income Tax Time!

Dana Krull, CPA from Himes & Krull, LLC in Pierceton, will once again do income tax returns for Timbercrest residents. If you would like him to prepare your tax return, please turn in your information to the Front Desk by **Thursday, March 5**. Dana will pick them up. The tax returns will be returned to residents when they are finished. If you have questions, please contact the front desk.

## Every Quilt Has a Tale

Anyone that has ever quilted or been gifted a quilt knows that there is a story behind every square. We are going to give our quilt exhibitors the opportunity to share their stories on **Thursday, February 19<sup>th</sup> at 1:00 p.m. in the Assembly Room.** This year we have more than 15 exhibitors, with more than 30 quilts including one that is more than 100 years old! There will also be Timbercrest quilts available for purchase.



*This quilt topper was made by ladies of the Mexico Home.*

8								
		3	6					
	7			9		2		
	5				7			
				4	5	7		
			1				3	
		1					6	8
		8	5				1	
	9					4		

All rights reserved. www.abacus.com